



RFP 2024-11
MARATHON BUILDING SEAL AND PAINT
QUESTIONS & ANSWERS

1. Are there any site plans that give dimensions of the building?

It is approximately 24,000 square feet total. Site plan and side elevation are included here, on page 2 and 3.

- 5'-1" OVERALL, 4' SPREAD
- 5'-1" OVERALL, 4' SPREAD
- 5'-1" OVERALL, 4' SPREAD
- 5'-1" OVERALL, 4' SPREAD
- 3 TO 7 GALLON, 3' OVERALL
- 3 TO 7 GALLON, 3' OVERALL
- 3 TO 7 GALLON, 3' OVERALL
- 3 TO 7 GALLON, 3' OVERALL
- 3 TO 7 GALLON, 3' OVERALL
- 3 TO 7 GALLON, 3' OVERALL

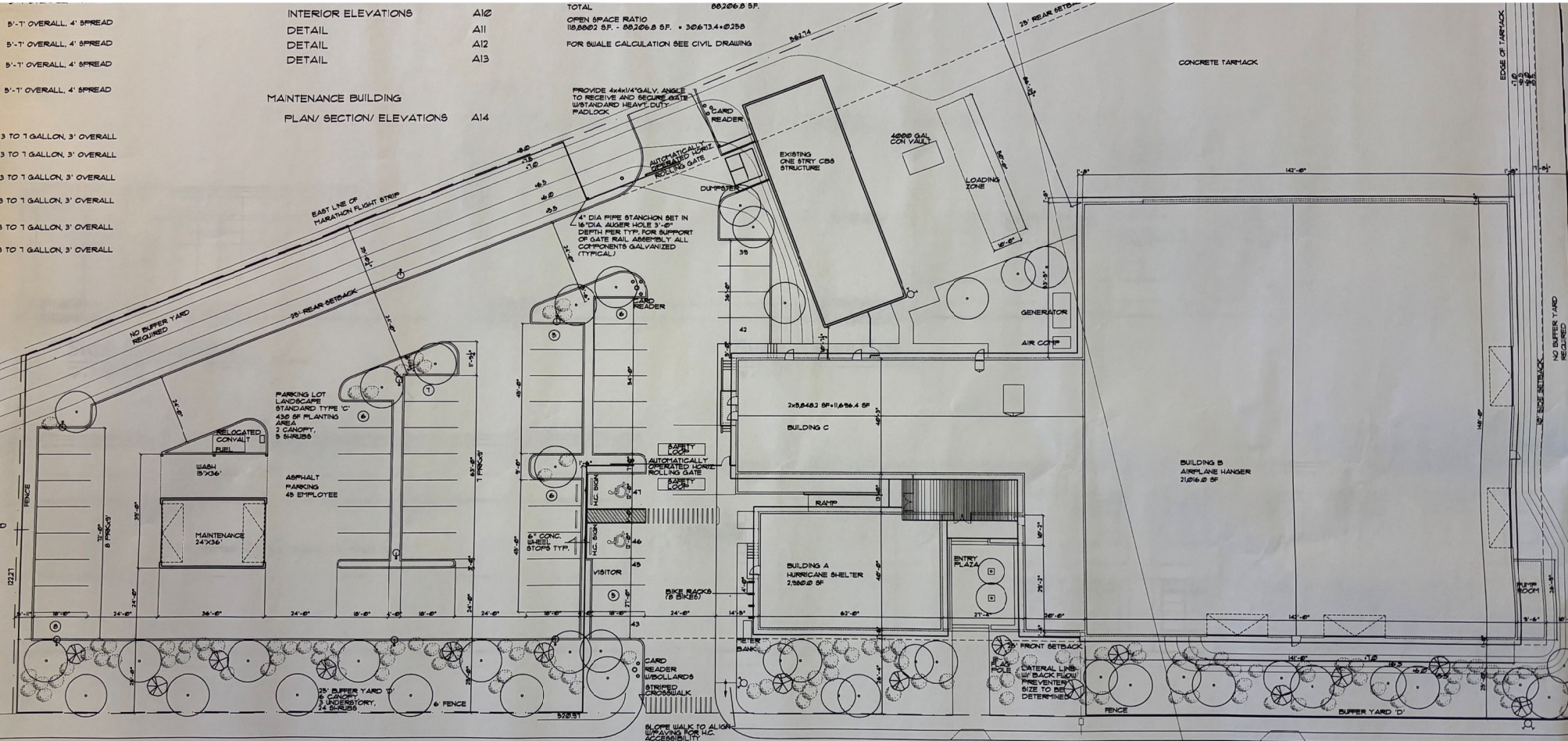
INTERIOR ELEVATIONS A12
 DETAIL A11
 DETAIL A12
 DETAIL A13

TOTAL 88206.8 SF.
 OPEN SPACE RATIO 18.8802 SF. - 88206.8 SF. = 30673.4+0.258
 FOR BUFILE CALCULATION SEE CIVIL DRAWING

MAINTENANCE BUILDING
 PLAN/ SECTION/ ELEVATIONS A14

PROVIDE 44" MIN. GALV. ANGLE TO RECEIVE AND SECURE GATE W/ STANDARD HEAVY DUTY PADLOCK

4" DIA PIPE STANCHION SET IN 18" DIA AUGER HOLE 3'-0" DEPTH PER TYP. FOR SUPPORT OF GATE RAIL ASSEMBLY. ALL COMPONENTS GALVANIZED (TYPICAL)



(COUNTY ROAD) 10TH STREET
 50 FOOT RAW - 20 FEET ASPHALT PAVING WATER MAIN

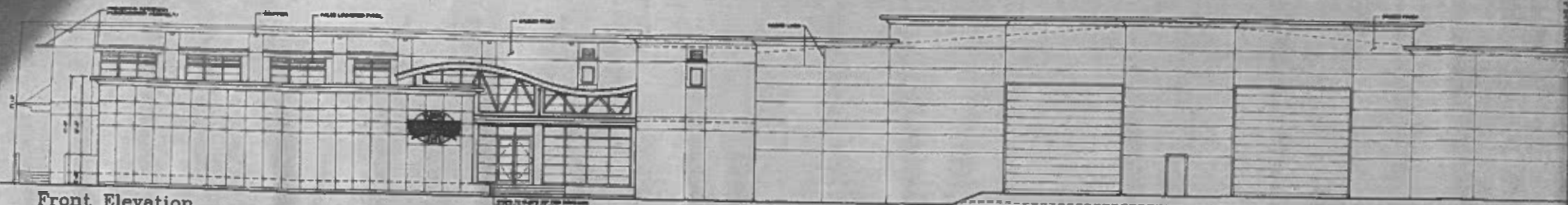
KEY COLONY SUBDIV.
 No. 1 (P.B. 3 PG. 107)



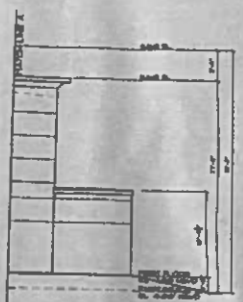
LIGHTPOLE
 FIXTURE POWER:
 20500 INITIAL LUMENS
 MAXIMUM ILLUMINATION:
 NOT TO EXCEED 15
 FOOT CANDLES AT THE
 PROPERTY LINE FOR
 CUT OFF LIGHTS, MAX
 HEIGHT OF 35' ABOVE
 GRADE

KEY COLONY SUBDIV.
 No. 2 (P.B. 3 PG. 152)

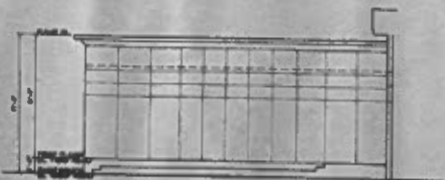
LEGEND



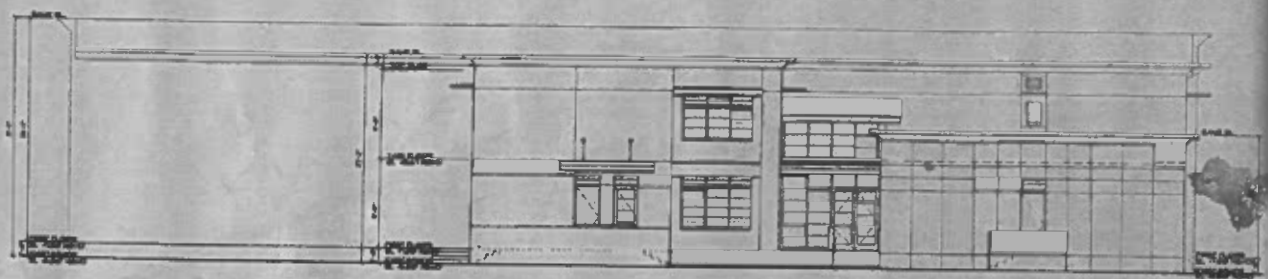
Front Elevation
1/4" = 1'-0"



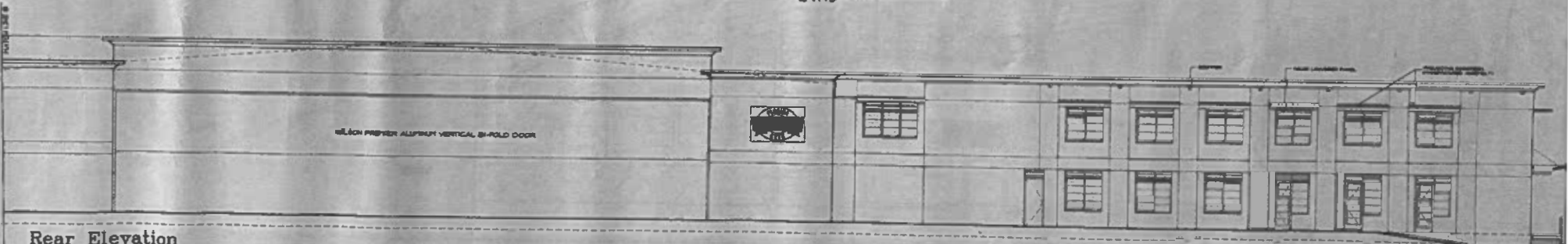
Front Elevation
1/4" = 1'-0"



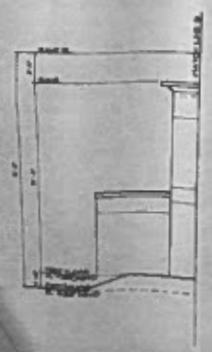
Side Elevation
1/4" = 1'-0"



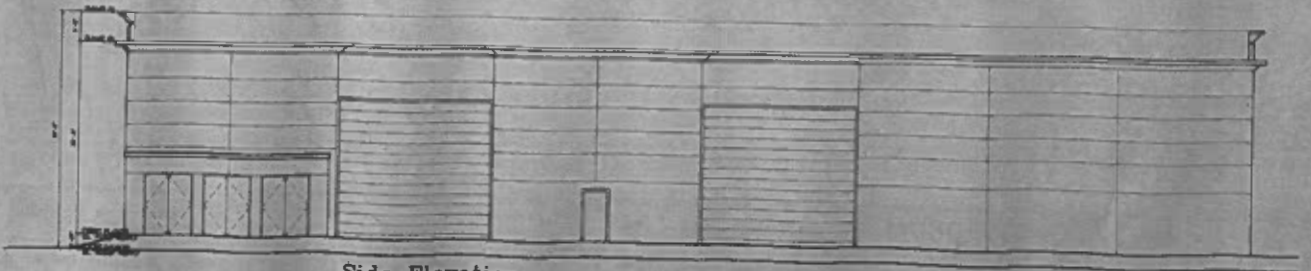
Side Elevation
1/4" = 1'-0"



Rear Elevation
1/4" = 1'-0"



Rear Elevation
1/4" = 1'-0"



Side Elevation
1/4" = 1'-0"